

## PRESSURE BALANCING GLUE REGULATOR

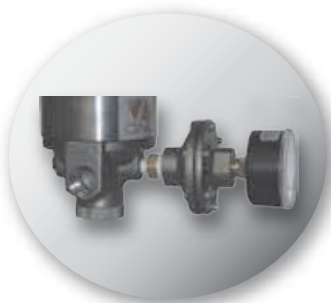
### Fluid Handling System

The Valco Melton Pressure-Balancing Glue Regulator ensures uniform adhesive application during startup and at varying line speeds by completely controlling its amount of pressure. When the machine is stopped, its piston pulls up, creating space that relieves pressure and prohibits it from building up. The pressure-balancing regulator also prevents glue from flooding when the machine restarts.

- 1 and 3:1 ratios to match glue source pump
- Rolling diaphragm design for frictionless movement and no losses
- Drops pressure back to zero under emergency stop conditions
- Eliminates costly bypass valve and plumbing
- Easy to clean and install



Air-piloted with manual bypass valve. When used together with the Valco® ECP flow control, the regulator automatically adjusts adhesive pressure as machine speeds increase and decrease.



Stainless-steel fluid section and gauge protector provide superior chemical resistance.

